

FITZROY PLACE

Newsletter 19 – July 2013

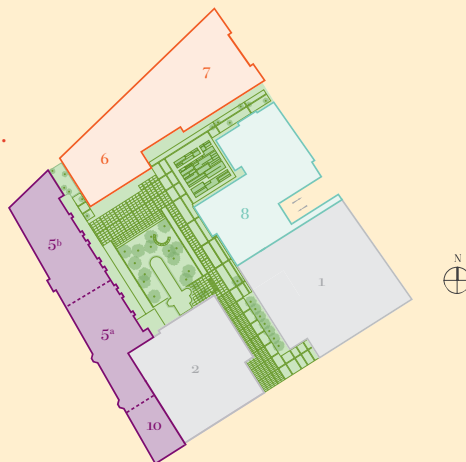
Introduction

RENOVATION WORKS START ON THE CHAPEL



Works Summary

The last remaining site cabin has been removed from Riding House Street.
Office Block 1: the steel frame is 75% complete.
Office Block 2: the steel frame 65% complete.
Block 5: Cladding panels are in place from the Lower ground floor to 8th floor, with windows in place on the lower ground floor with the Lift Core to the south of this elevation having progressed to Level 6.
Block 6 & 7: (North) the concrete slab is complete to the 7th floor.
Block 6 & 7: (South) the concrete slab is complete to the 5th floor, with cladding panels and window frames installed to the lower ground and ground floors.
Block 8: concrete slabs and columns complete to the 4th floor.
Block 10: work has progressed to Level 4.



Sir Robert M'Alpine Contact Information

Bruce Nixon
Community Liaison Manager
b.nixon@sir-robert-mcalpine.com
0800 0147593

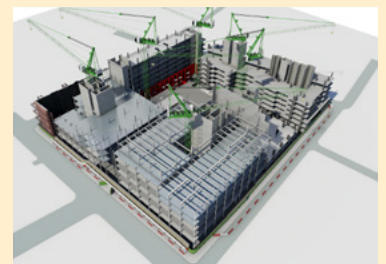
Site Operating Hours

Mon – Fri: 8am – 6pm
Sat: 8am – 1pm



The coming months' activities

- Office Block 1: Frame and concrete 100% complete, cladding complete on West elevation, glass installed to Level 1.
- Office Block 2: Steel frame and decking 100% complete, cladding complete on North elevation.
- Block 5: Concrete frame and cladding complete.
- 50% of supporting steelwork removed from Nassau St façade.
- Block 10: Concrete frame 100% complete.
- Block 6 & 7: (North) top floor concrete slab complete.
- Block 6 & 7: (South) top floor concrete slab complete, Lower Ground & Ground floors window frame installation complete and brickwork cladding installed.
- Block 8: 8th floor concrete slabs and columns complete.



Start of July



End of July

FITZROY PLACE

Traffic Routes

The Cleveland Street entrance continues to be used for loading / off-loading by crane. Please note that we will no longer use Cleveland Street for loading / off-loading after 6pm from Monday 8th July 2013.

Nassau Street is also used as a secondary facility for off-loading materials by crane. The gates to the site entrance on Mortimer Street (Gate1) are being used for access and egress of site traffic. Gate 4 on Cleveland Street is now in use and is, currently, the access and egress point for site skips.

Gates 2 & 3, also on Cleveland Street will come into use this month.

We will continue to ensure we have the right number of marshals in place throughout the development.

Neighbourly Matters

All concrete pumps have now been removed from Cleveland Street. We are still looking to undertake more repair works to the Cleveland Street carriageway and we will look at this again after the utility companies reopen the roads.

Also operating under the Riding House Street road closure, All Souls CoFE Primary School Summer Fair took place on Saturday 6th July. The Great Titchfield Street Architecture Festival on 22nd June was a great success and plans are being considered to repeat the event next year.

We continue to work with neighbouring contractors, including those undertaking works for the various utilities companies to ensure their works around the site, and in Camden, have as little adverse impact on the area as possible.

www.ccscheme.org.uk

The site is registered with the Considerate Constructors Scheme (CCS), the national initiative set up by the construction industry to improve its image.

The development team will aim to keep neighbours as informed as possible to any potential disturbance.

Fitzroy Place Community Web Site

This site now includes some time lapse films of the development's progress so far as well as other content.

www.fitzroyplacecommunity.com

This is to help keep neighbours up to date with the development and contains useful information such as newsletters, contact details, answers to frequently asked question and some progress photography.

Contact

Our Community Liaison Freephone Number is **0800 0147593**.

Should you prefer to receive this newsletter by email, please contact Bruce Nixon at b.nixon@sir-robert-mcalpine.com



Aerial view from Mortimer Street.



View from the junction of Riding House Street and Cleveland Street.



View from the junction of Mortimer Street and Cleveland Street.



Great Titchfield Festival of Architecture.