

# FITZROY PLACE

Newsletter 20 – August 2013

## Introduction

## REMOVAL OF THE PROTECTIVE STEELWORK ON NASSAU STREET IS UNDERWAY.



## Works Summary

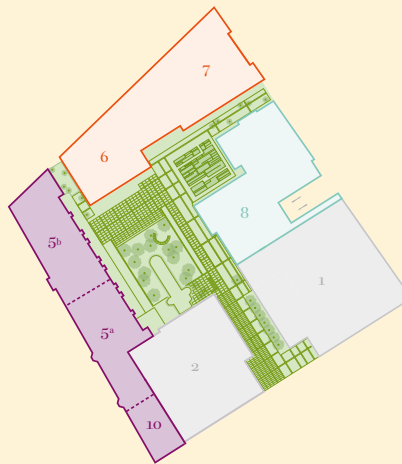
The frame to Office Block 1 is now complete with concrete roof works on-going. Cladding to this block is underway to the South and East elevations, with glazing underway on the West elevation where the pre-cast panels are in place.

The steel frame to Office Block 2 is also finished with concrete complete up to Level 6 with cladding commenced to the North elevation.

Cladding is complete to the East elevation of Block 5, with windows being in place to Level 2.

The concrete floor slab is complete to Block 6 & 7. Lower ground and ground floor cladding panels are in place and window frames have been installed. 8th floor concrete slabs and columns complete to Block 8 with the 9th and 10th floors being underway.

Block 10: Concrete frame complete.



## Sir Robert M'Alpine Contact Information

**Bruce Nixon**  
Community Liaison Manager  
b.nixon@sir-robert-mcalpine.com  
0800 0147593

## Site Operating Hours

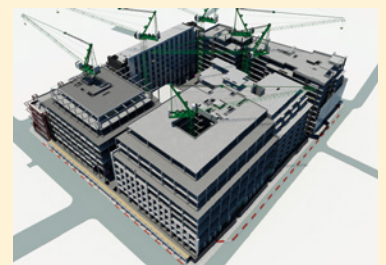
**Mon – Fri:** 8am – 6pm

**Sat:** 8am – 1pm



## The coming months' activities

- Office Block 1: Cladding on-going to East elevation, roof membrane works commencing.
- Office Block 2: Concrete works complete.
- Block 5: Roof membrane works commencing, window frames installed to Level 3.
- 100% of supporting steelwork removed from Nassau Street façade, renovation works underway.
- Block 6 & 7: Lower ground floor brickwork on-going, window frames installed to Level 3.
- Block 8: Frame and concrete complete.



Start of August



End of August

# FITZROY PLACE

---

## Traffic Routes

The Cleveland Street entrance continues to be used for loading/off-loading by crane with Nassau Street being used as a secondary facility for off-loading materials by crane.

The gates to the site entrance on Mortimer Street (Gate 1) are being used for access and egress of site traffic. Gate 4 on Cleveland Street remains as the access and egress point for site skips.

Gates 2 and 3, also on Cleveland Street are being used more frequently to ease pressure of traffic from Mortimer Street Gate 1.

We will continue to ensure we have the right number of marshals in place throughout the development.

---

## Neighbourly Matters

We are also working with the various utilities companies to ensure their works around the site, and in Camden, have as little impact on the area as possible.

### \*\* ROAD CLOSURES\*\* update

Nassau Street is now reopened.  
Cleveland Street is now closed until 12th September.  
Mortimer Street – 22 July – 26 August, UKNP, Thames Water, BT OpenReach and Squire (gas) will all operate under this partial closure.

The development team will aim to keep neighbours as informed as possible to any potential disturbance.

The site is registered with the Considerate Constructors Scheme (CCS), the national initiative set up by the construction industry to improve its image.

[www.ccscheme.org.uk](http://www.ccscheme.org.uk)

The development team will aim to keep neighbours as informed as possible to any potential disturbance.

---

## Fitzroy Place Community Web Site

This site now includes some time lapse films of the development's progress so far as well as other content.

[www.fitzroyplacecommunity.com](http://www.fitzroyplacecommunity.com)

This is to help keep neighbours up to date with the development and contains useful information such as newsletters, contact details, answers to frequently asked questions and some progress photography.

---

## Contact

Our Community Liaison Freephone Number is **0800 0147593**.

Should you prefer to receive this newsletter by email, please contact Bruce Nixon at [b.nixon@sir-robert-mcalpine.com](mailto:b.nixon@sir-robert-mcalpine.com)



*Aerial view from Mortimer Street.*



*Cladding panels in place to the West elevation of Office Block 1.*



*View from Cleveland Street and Riding House Street junction.*



*View from corner Mortimer Street and Cleveland Street.*