

# FITZROY PLACE

Newsletter 37 – March 2015

## Introduction

## SITE HOARDING MOVES BACK AS WALKWAY BETWEEN OFFICE BUILDINGS REVEALED



## Works Summary

Cleveland St: Closed from Mortimer St to Tottenham St for resurfacing.

Mortimer St: Footpath works complete.

Podium: Waterproofing and hard landscaping works continue.

Block 6 & 7: Scaffolding removal complete internal fit out continuing.

Block 8: Balconies completing, internal fit progressing.

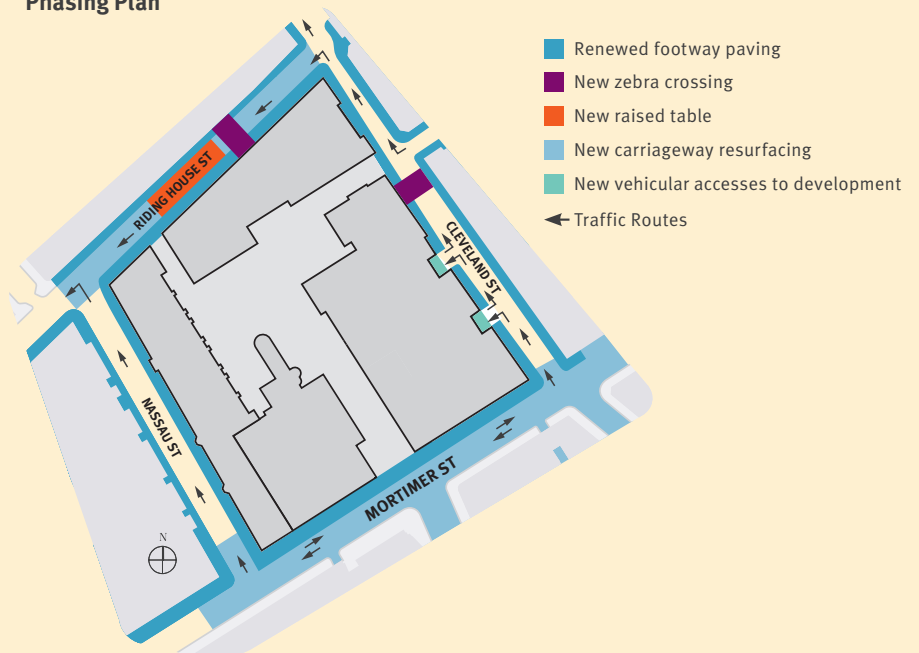
Block 5: Fit out progressing internally, footpath works underway.

1 Fitzroy Place: Fit out underway by bwi for Estee Lauder.

2 Fitzroy Place: In final stages of testing before hand over.

Chapel Approaching hand over.

## Phasing Plan



**Sir Robert McAlpine**

**Contact Information**

**Bruce Nixon**

Community Liaison Manager

b.nixon@sir-robert-mcalpine.com

0800 0147593

**Site Operating Hours**

**Mon – Fri:** 8am – 6pm

**Sat:** 8am – 1pm



## Coming month's activities

The hoarding will be removed from No.10 Mortimer St and the scaffolding will be removed from the Riding House St façade.

Waterproofing and landscaping works will continue to the podium and around the chapel.

Residential Blocks: Internally, partitioning works continue to residential areas as does the installation of kitchen units, fitted furniture, stone flooring and wall tiles along with sanitary ware.

Electrical and plumbing installation works are also on-going across all residential blocks.

Corridors and entrance doorways being clad.

2 Fitzroy Place and Chapel: Completing.

# FITZROY PLACE

## Traffic Routes

Cleveland St is now closed to traffic from Mortimer St for approximately eight weeks. This is so that final resurfacing works can take place. The section of road from Mortimer St to Tottenham St will close for approximately four weeks, after which the section of road from Tottenham St to Riding House St will close again for four weeks for final resurfacing. Gate 4 on Cleveland St will continue to be used for loading / offloading.

The new security office on Riding House St will continue to take small deliveries to ease the pressure on Cleveland St.

We will continue to ensure we have the right number of marshals in place throughout the development.

Site access gates on Cleveland St to be maintained throughout.

Pedestrian access to completed buildings will be maintained throughout the works.

## Neighbourly Matters

We continue to work with neighbouring contractors, so that we can co-ordinate any works or activities that may have an adverse impact on the area.

The remaining hoarding on the corner of Mortimer St and Nassau St is expected to be removed this month.

## Westminster City Council is improving the streetscape surrounding the new Pearson Square development

Programme work dates: July 2014 – May 2015

These improvements include:

- Repaving footways adjacent to the new Pearson Square development using artificial stone paving and granite kerbs.
- Resurfacing the footways on Mortimer St between Nassau St and Well St with new mastic asphalt.
- Carriageway resurfacing of adjacent streets to the new Pearson Square Development.
- Introducing 2 new zebra crossings on Cleveland St and Riding House St.
- Upgrading the traffic signalised junction at the junction of Mortimer St, Cleveland St, Newman St and Goodge St.

## Status

The development team aim to keep neighbours as informed as possible to any potential disturbance.

As always, the site will be manned by 24 hour security and the freephone number telephone will remain available for use.

## Fitzroy Place Community Web Site

This site now includes some time lapse films of the development's progress so far as well as other content.

This is to help keep neighbours up to date with the development and contains useful information such as newsletters, contact details, answers to frequently asked questions and some progress photography

[www.fitzroyplacecommunity.com](http://www.fitzroyplacecommunity.com)

Should you prefer to receive this newsletter by email, please contact Bruce Nixon at: [b.nixon@sir-robert-mcalpine.com](mailto:b.nixon@sir-robert-mcalpine.com)

**Community Liaison Manager Bruce Nixon.**



Office Blocks 1 & 2 from corner of Mortimer St & Nassau St



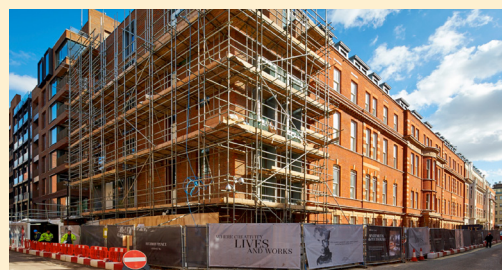
Office Blocks - Mortimer St



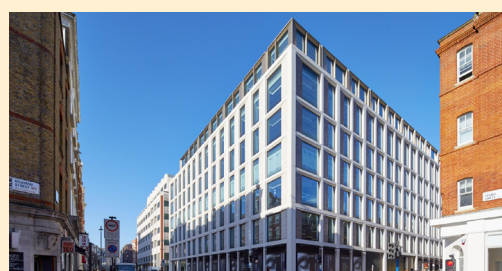
Apartment approaching completion



Office Block 2 Entrance



Nassau St Riding House St junction



View from corner of Cleveland St and Mortimer St