

Sir Robert M'Alpine

Contact Information

Bruce Nixon

Community Liaison Manager

b.nixon@sir-robert-mcalpine.com

0800 0147593

Site Operating Hours

Mon – Fri: 8am – 6pm

Sat: 8am – 1pm



FITZROY PLACE

Newsletter 39 – May 2015

Introduction

MAGNOLIA TREES PLANTING AROUND THE CHAPEL COMPLETES



Last month's activities

Thames water deep drainage works at the junction of Nassau St and Riding House St.

UKPN work completing in Nassau St.

Water proofing and landscaping works continue to the podium and around the chapel.

Internally, partitioning works continue to residential areas with the installation of kitchen units, fitted furniture, stone flooring and wall tiles along with sanitary ware.

Electrical and plumbing installation works are also on-going across all residential blocks.

Works Summary

Cleveland St will remain closed until early June; final surfacing and 'white lining' completing at the end of May.

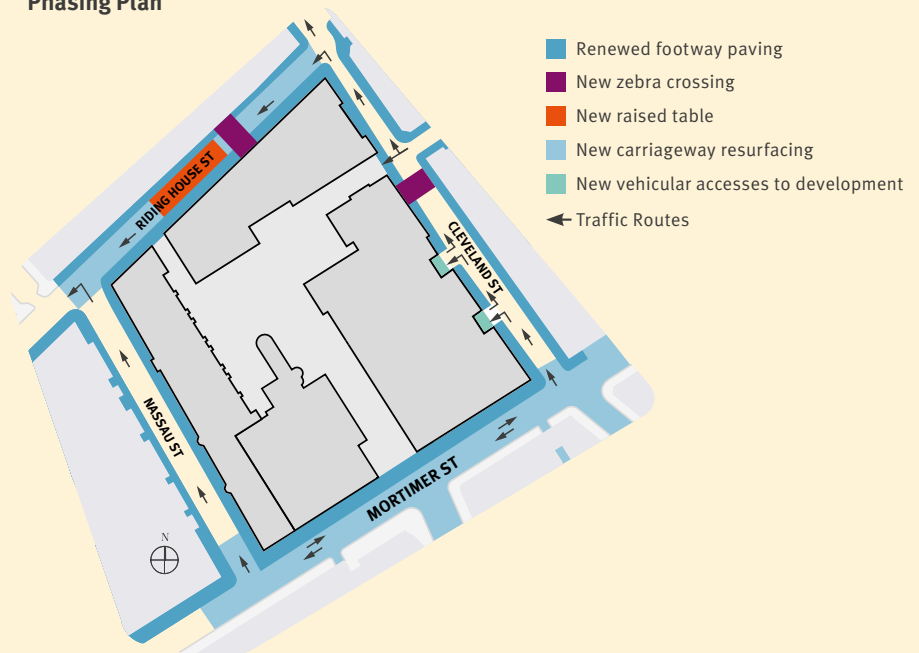
Paving works will recommence in Nassau St and are expected to continue for 5 weeks.

Soft landscaping is well underway with all trees now being planted.

Waterproofing and hard landscaping continue across the north and west of the courtyard.

Internally, partitioning works continue to some areas along with kitchen and cabinet furniture installation, flooring, tiling and sanitary ware.

Phasing Plan



FITZROY PLACE

Traffic Routes

Cleveland St remains closed to traffic from Mortimer St. The section of road from Tottenham St to Riding House St is closed for improvement works, after these works complete, Cleveland St will remain closed until early June.

Gate 4 on Cleveland St will continue to be used for loading /offloading throughout this period.

The new security office on Riding House St will continue to take small deliveries to ease the pressure on Cleveland St.

We will continue to ensure we have the right number of marshals in place throughout the development.

Pedestrian access to completed buildings will be maintained throughout the works.

Neighbourly Matters

We continue to work with neighbouring contractors, so that we can co-ordinate any works or activities that may have an adverse impact on the area.

Westminster City Council is improving the streetscape surrounding the new Pearson Square development

Programme work dates: extended until end of June 2015

- Repaving footways adjacent to the new Pearson Square development using artificial stone paving and granite kerbs
 - Resurfacing the footways on Mortimer St between Nassau St and Well St with new mastic asphalt
 - Carriageway resurfacing of adjacent streets to the new Pearson Square development
 - Introducing 2 new zebra crossings on Cleveland St and Riding House St
 - Upgrading the traffic signalised junction at the junction of Mortimer St, Cleveland St, Newman St and Goodge St
 - Improved parking layout, public lighting and drainage throughout
-

Status

The development team aim to keep neighbours as informed as possible to any potential disturbance.

As always, the site will be manned by 24 hour security and the freephone number telephone will remain available for use.

Fitzroy Place Community Web Site

www.fitzroyplacecommunity.com

This is to help keep neighbours up to date with the development and contains useful information such as newsletters, contact details, answers to frequently asked question and some progress photography.

The development team will aim to keep neighbours as informed as possible to any potential disturbance.

Community Liaison Manager Bruce Nixon.



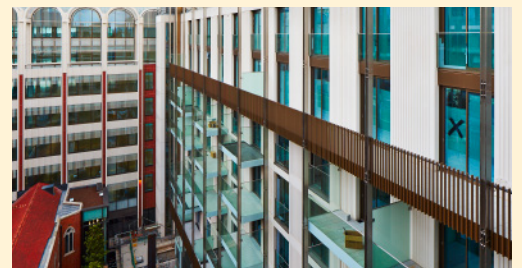
Magnolia trees in square



London Plane tree planted on site



Block 8



Block 5 balconies completing



Block 6 apartment

exemplar

Sir Robert
McALPINE